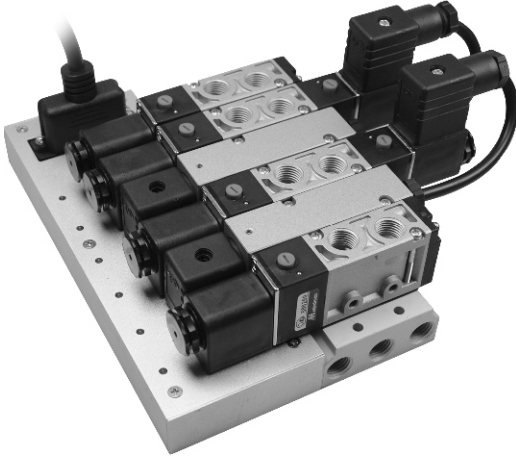


MVB series

MULTI CONNECTOR SYSTEM



Specification:

- DC 24V.
- 25 Pin D-sub connector.
- Simple electric wire system.

Remark:

- MVB-300 series is available in 3-station ~ 12- station manifold.
- MVB-300 can not be installed with 5/3 valves.
- Individual manifold can be ordered. EX: MVB-180-5B5-BSP.
- 13-station ~ 20-station manifold can be offered as customised products and please contact sales people before ordering.
- Please contact sales people for the manifold for 3/2 valves.

Order example (Multi connector system) :

MVB — 180 — 5B6 — SSSDC — BSP

MODEL

BODY WIDTH

180: For MVSC-180 series
220: For MVSC-220 series
300: For MVSC-300 series

MANIFOLD NUMBER
2, 3, 4, 5, 6, 7, 8, 9, 10, 11, 12

MANIFOLD

5B: 4 way for body ported type
3B: 3 way for body ported type

SOLENOID VALVE (for 5B)

S	4E1- 5/2 Single solenoid
D	4E2- 5/2 Double solenoid
C	4E2C- 5/3 Double solenoid
P	4E2P- 5/3 Double solenoid
R	4E2R- 5/3 Double solenoid

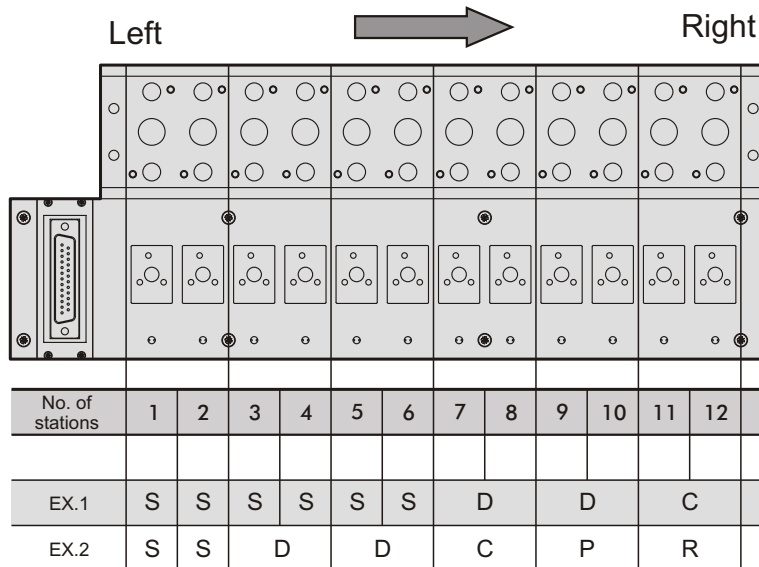
PORT THREAD

Blank: PT thread
BSP: BSP thread
NPT: NPT thread

SOLENOID VALVE (for 3B)

C	3E1-NC- 3/2 Single solenoid/Normally closed
O	3E1-NO- 3/2 Single solenoid/Normally open
D	3E2- 3/2 Double Solenoid

- ※ Every double solenoid valve requires 2 stations on the manifold. (One is for the valve and another is for the adapter)
- ※ Valves are assembled from the left to the right.



※EX.1: 5B12-SSSSSSDDC

※EX.2: 5B12-SSDDCPR

MVB Order example

MULTI CONNECTOR SYSTEM

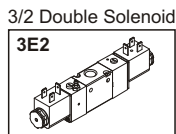
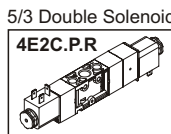
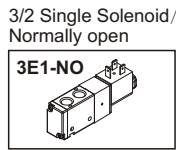
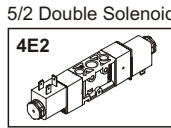
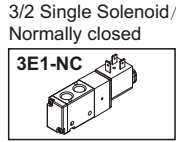
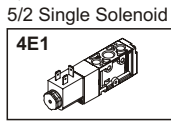


Order example (Solenoid valve) :

MVSC – 180 – 4E2C – DC24 – N – BSP

MODEL

BODY WIDTH
180
220
300



VOLTAGE N : No connector

PORT THREAD
Blank: PT thread
BSP: BSP thread
NPT: NPT thread

Order example (Adapter for a double solenoid valve) :

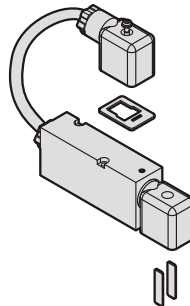
MVB – 180 – 5T

MODEL

BODY WIDTH

180: For MVSC-180 series
220: For MVSC-220 series
300: For MVSC-300 series

3T : Adapter for a 3-port double solenoid valves.
5T : Adapter for a 5-port double solenoid valves.

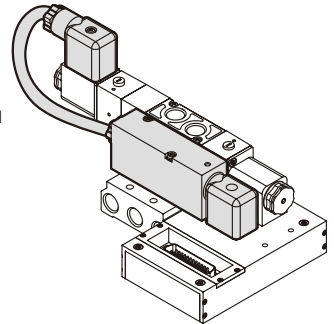


Gasket for connector × 1

Connector × 1
(includes adapter)

Connection pin × 2

Ex :



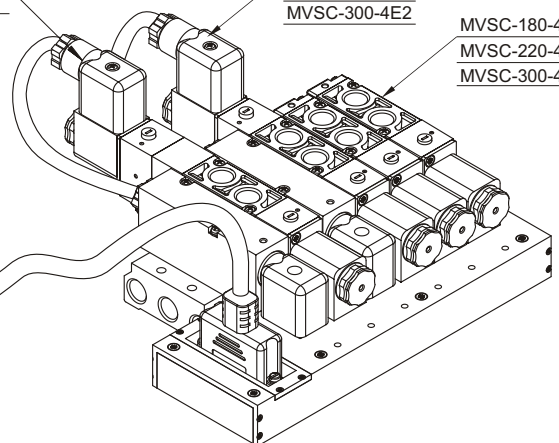
25 PIN :

Wire color	Pin No.	Solenoid No.	
Brown	1	S-01	S-01
Light brown	14	S-02	S-02
Red	2	S-03	S-03
Light brown / Light black	15	S-04	S-04
Orange	3	S-05	S-05
Orange / Black	16	S-06	S-06
Pink	4	S-07	S-07
Pink / Black	17	S-08	S-08
Yellow	5	S-09	S-09
Yellow / Black	18	S-10	S-10
Green	6	S-11	S-11
Green / Black	19	S-12	S-12
Light green	7	S-13	S-13
Light green / Light black	20	S-14	S-14
Blue	8	S-15	S-15
Light purple	21	S-16	S-16
Light blue	9	S-17	S-17
Light blue / Light black	22	S-18	S-18
Purple	10	S-19	S-19
Light purple / Light black	23	S-20	S-20
Gray	11	S-21	S-21
Gray / Black	24	S-22	S-22
White	12	S-23	S-23
Black	13	COM	COM
White / Black	25	COM	COM

MVSC-180-4E2C.P.R
MVSC-220-4E2C.P.R

MVSC-180-4E2
MVSC-220-4E2
MVSC-300-4E2

MVSC-180-4E1
MVSC-220-4E1
MVSC-300-4E1

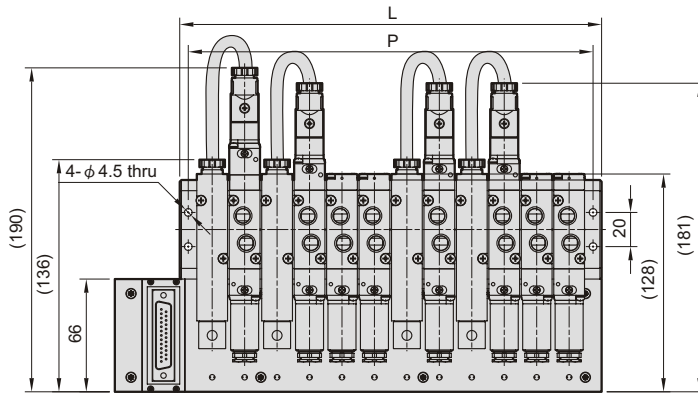


MVB-180 Dimensions

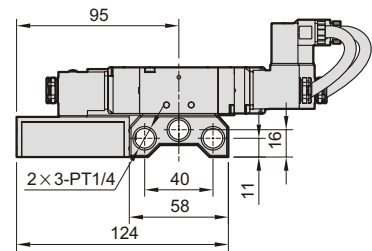
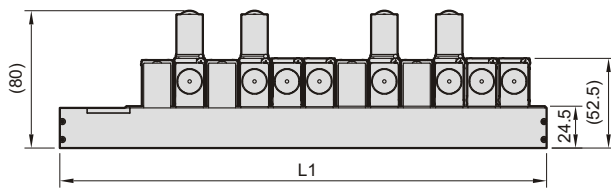
MULTI CONNECTOR SYSTEM



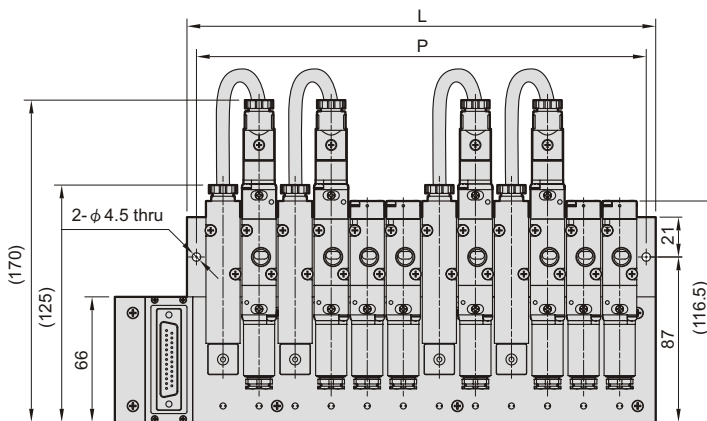
MVB-180-5B*



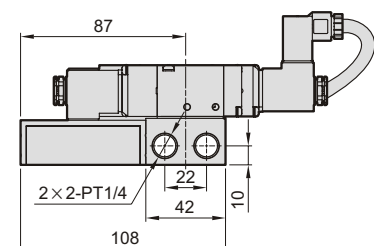
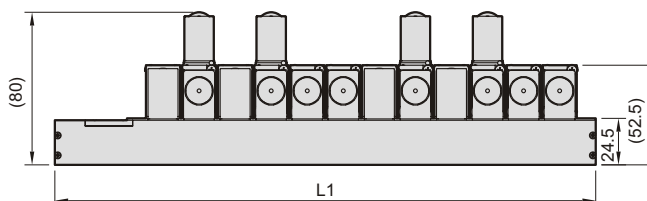
No. of stations	L	L1	P
2	57	95	47
3	76	114	66
4	95	133	85
5	114	152	104
6	133	171	123
7	152	190	142
8	171	209	161
9	190	228	180
10	209	247	199
11	228	266	218
12	247	285	237



MVB-180-3B*



No. of stations	L	L1	P
2	57	95	47
3	76	114	66
4	95	133	85
5	114	152	104
6	133	171	123
7	152	190	142
8	171	209	161
9	190	228	180
10	209	247	199
11	228	266	218
12	247	285	237

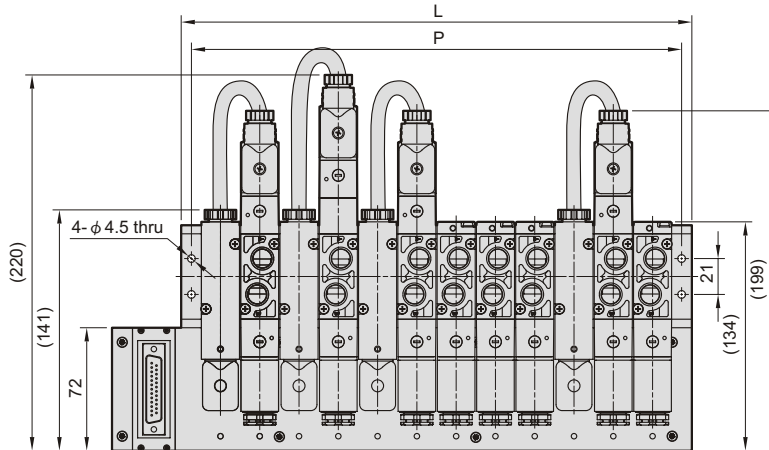


MVB-220 Dimensions

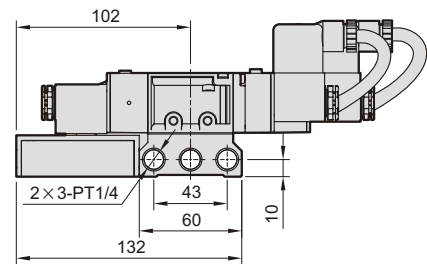
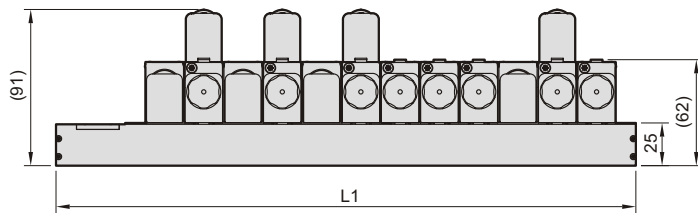
MULTI CONNECTOR SYSTEM



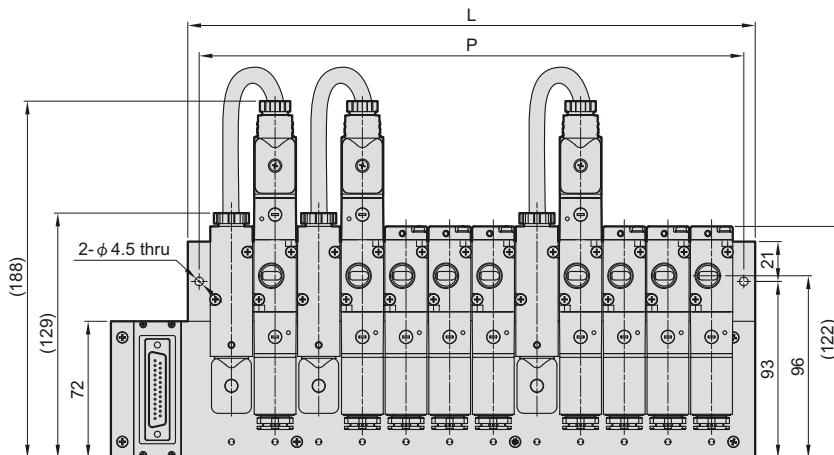
MVB-220-5B*



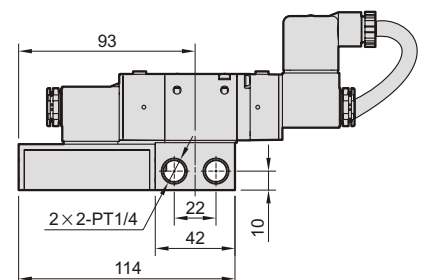
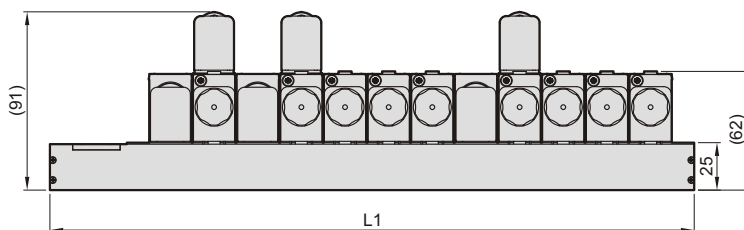
No. of stations	L	L1	P
2	69	109.5	57
3	92	132.5	80
4	115	155.5	103
5	138	178.5	126
6	161	201.5	149
7	184	224.5	172
8	207	247.5	195
9	230	270.5	218
10	253	293.5	241
11	276	316.5	264
12	299	339.5	287



MVB-220-3B*



No. of stations	L	L1	P
2	69	109.5	57
3	92	132.5	80
4	115	155.5	103
5	138	178.5	126
6	161	201.5	149
7	184	224.5	172
8	207	247.5	195
9	230	270.5	218
10	253	293.5	241
11	276	316.5	264
12	299	339.5	287

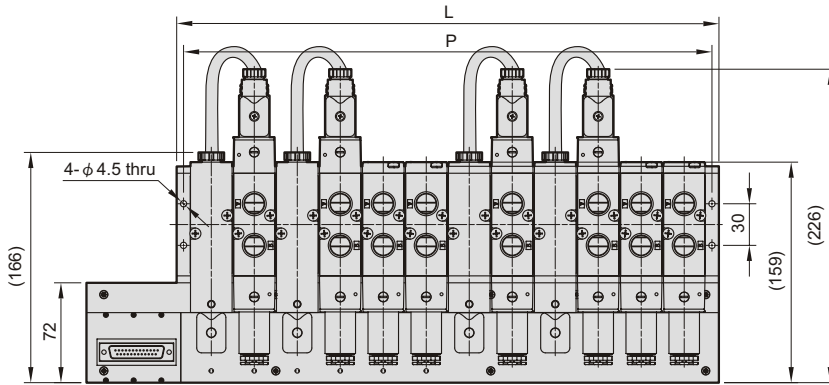


MVB-300 Dimensions

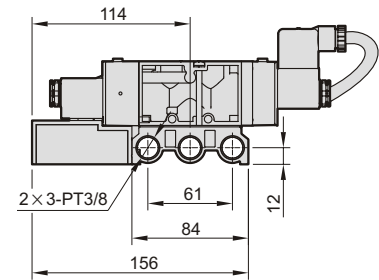
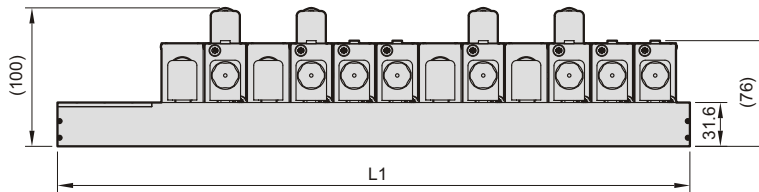
MULTI CONNECTOR SYSTEM



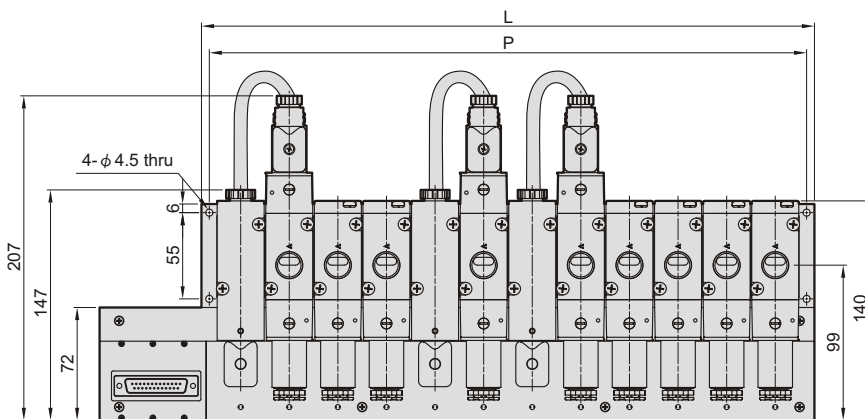
MVB-300-5B*



No. of stations	L	L1	P
3	112	177	102
4	143	208	133
5	174	239	164
6	205	270	195
7	236	301	226
8	267	332	257
9	298	363	288
10	329	394	319
11	360	425	350
12	391	456	381



MVB-300-3B*



No. of stations	L	L1	P
3	112	177	102
4	143	208	133
5	174	239	164
6	205	270	195
7	236	301	226
8	267	332	257
9	298	363	288
10	329	394	319
11	360	425	350
12	391	456	381

