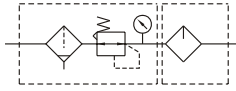


# MACP410 series Stainless steel #316 type

AIR UNITS (F.R.L.UNIT)



Symbol:



## Specification:

Model	MACP410		
Components	MAFR410, MAL410		
Bore No.	10A	15A	20A
Port size	PT 3/8	PT 1/2	PT 3/4
Medium	Air		
Operating pressure range	0~9.9 kgf/cm <sup>2</sup> (0~0.99 MPa)		
Proof pressure	15 kgf/cm <sup>2</sup> (1.5 MPa)		
Regulated pressure range	0.5~8.5 kgf/cm <sup>2</sup> (0.05~0.85 MPa)		
Ambient temperature	-5~+60°C (No freezing)		
Filter element	Standard: 40 μm Option: 5, 20 μm		
Lubricating oil capacity	130c.c		
Min. Flow for oil drip	50 ℓ/min		
Recommended lubricating oil	Turbine oil ISO-VG32		
Attachment	Pressure gauge, bracket		
Weight	4980 g		

Order example:

MACP410 - 15A - □ - BSP

MODEL

BORE SIZE  
10A: PT 3/8  
15A: PT 1/2  
20A: PT 3/4

FILTER ELEMENT  
Blank: 40 μm  
5u: 5 μm  
20u: 20 μm

PORT THREAD  
Blank: PT thread  
BSP: BSP thread  
NPT: NPT thread

