

MSR* / MEF300 series

PLASTIC SILENCER / EXHAUST CLEANER



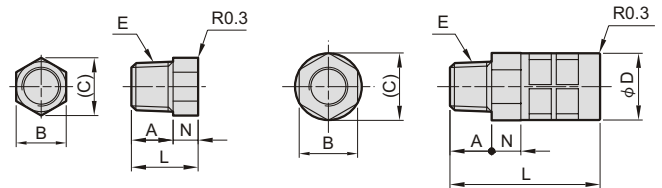
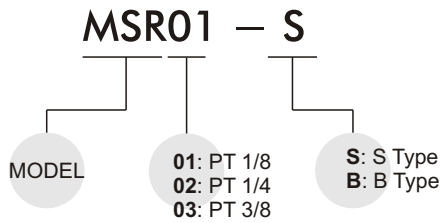
Specification:

Model	MSR
Medium	Air
Operating pressure range	0~9 kgf/cm ²
Ambient temperature	0~60°C

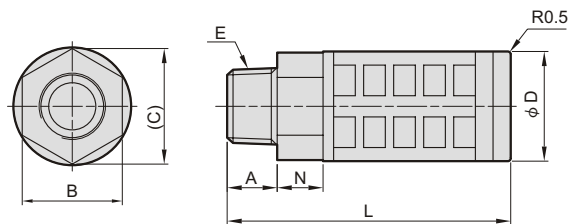
MSR01-S

MSR02-S

Order example:



MSR*-B



MSR*-*

Model	Code Port size	A	B	C	D	E	L	N
MSR01-S	PT 1/8	10	10	11.5	-	PT 1/8	16	6
MSR01-B	PT 1/8	7	14	16.2	16	PT 1/8	33	7
MSR02-S	PT 1/4	10	14	16.2	16	PT 1/4	36	7
MSR02-B	PT 1/4	10	17	19.6	20.3	PT 1/4	63	8.5
MSR03-B	PT 3/8	12	24	26.2	26.3	PT 3/8	67.5	11

MEF300

Exhaust Cleaner

Features:

- Centralised unit for collecting and cleaning exhausted air.



Order example:

MEF300 - 03

MODEL

03: PT 3/8

