

MSLE series

PLASTIC SILENCER



Order example:

MSLE — 01 — 70

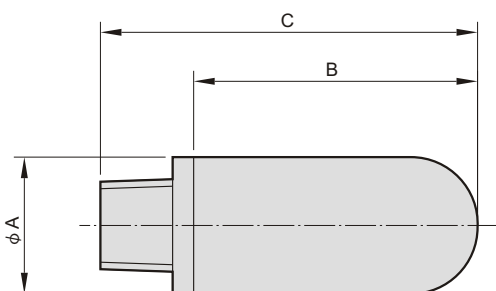
MODEL

PORT SIZE

PORE SIZE

- 01 : PT 1/8
- 02 : PT 1/4
- 03 : PT 3/8
- 04 : PT 1/2
- 06 : PT 3/4
- 06D:PT 3/4
- 08 : PT 1

70 : 70 μ



Features:

- Porous polyethylene moulded body allows high flow with low noise.
- Wide range of connecting threads available to screw into exhaust port of control valve.
- High noise reduction.

■ Significant noise reduction & high air flow

With double layer design, significant noise reduction and high air flow can be achieved at the same time.

■ Easy installation

With different adapter, silencers screw directly to the exhaust port.

■ High working pressures

Working pressures up to 10.0 kg/cm².

■ Chemical resistance

High chemical resistance & Rust free.

■ Maintenance free

Oil and water are not able to affect polyethylene silencers.

Specification:

| | |
|--------------------------|--------------------------|
| Medium | Air |
| Operating pressure range | 10.0 kgf/cm ² |
| Ambient temperature | 0~+60°C |

| Model | Code Port size | A | B | C |
|----------|----------------|------|-------|-------|
| MSLE-01 | PT 1/8 | 15.6 | 27.3 | 37.3 |
| MSLE-02 | PT 1/4 | 19 | 30.5 | 43.3 |
| MSLE-03 | PT 3/8 | 25 | 53 | 69 |
| MSLE-04 | PT 1/2 | 25 | 62.5 | 78.5 |
| MSLE-06 | PT 3/4 | 38 | 108.4 | 132.4 |
| MSLE-06D | PT 3/4 | 50 | 107 | 127 |
| MSLE-08 | PT 1 | 50 | 107 | 139 |

- MSLE-04-70 means a PT 1/2 silencer with 70 μ porous body.
- MSLE-06D-70 means a PT 3/4 double layer silencer with 70 μ porous body.
- Port size out of specification is also available.