

MSR* / MSLT / MEF300 系列

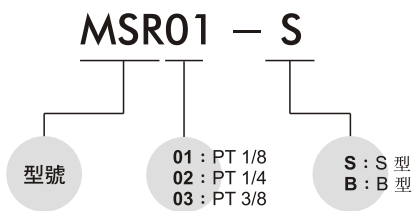
塑膠消音器 / 集中排氣集油器



規格：

型號	MSR* / MSLT
使用流體	空氣
使用壓力範圍	0~9 kgf/cm ²
周圍溫度	0~+60°C

訂購代號：



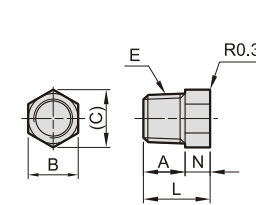
MSR* - *

型號	代號 配管口徑	A	B	C	D	E	L	N
MSR01-S	PT 1/8	10	10	11.5	-	PT 1/8	16	6
MSR01-B	PT 1/8	7	14	16.2	16	PT 1/8	33	7
MSR02-S	PT 1/4	10	14	16.2	16	PT 1/4	36	7
MSR02-B	PT 1/4	10	17	19.6	20.3	PT 1/4	63	8.5
MSR03-B	PT 3/8	12	24	26.2	26.3	PT 3/8	67.5	11

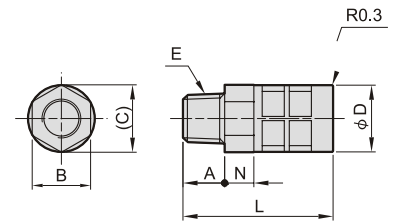
MSLT-*

型號	代號 配管口徑	A	B	C	D	E	L	N
MSLT-01	PT 1/8	6.2	-	-	16	PT 1/8	33	-
MSLT-02	PT 1/4	8	-	-	19.5	PT 1/4	42.3	-
MSLT-03	PT 3/8	10.5	-	-	24.5	PT 3/8	57	-
MSLT-04	PT 1/2	10.5	-	-	24.5	PT 1/2	57	-
MSLT-06	PT 3/4	19	48.5	54	49	PT 3/4	115	8
MSLT-08	PT 1	19	48.5	54	49	PT 1	115	8

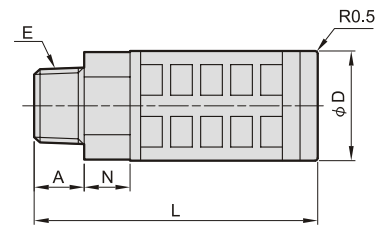
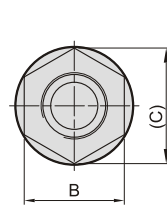
MSR01-S



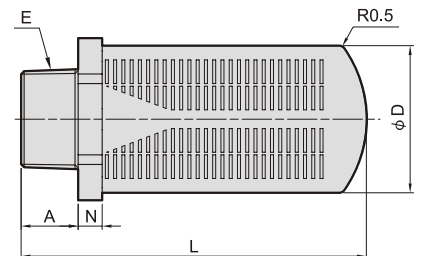
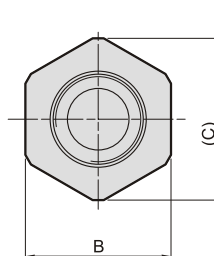
MSR02-S



MSR*-B



MSLT-0*



集中排氣集油器



訂購代號：

MEF300 - 03

型號

03 : PT 3/8

